



# Certificate of Analysis

Powered by Confident Cannabis

GBP Capital, LLC

PO Box 527  
Avon, OH 44011

Sample: 2103DBL0234.3313

METRC Sample:

Strain: Elderberry

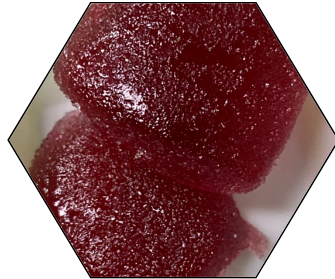
Ordered: 03/30/2021; Sampled: 03/29/2021; Completed: 03/30/2021

## CBD Gummy 25mg

Ingestible, Soft Chew



Commodity<sup>™</sup>  
The Hemp Company



### Cannabinoids

- CBC
- CBCa
- CBD
- CBDa
- CBDV
- CBDVa
- CBG
- CBGa
- CBL
- CBN
- Δ8-THC
- Δ9-THC
- THCa
- THCV
- THCVa

### Cannabinoids

<LOQ

25.029  
mg/unit

Δ9-THC + Δ8-THC

CBD

25.029  
mg/unit

NT

Total Cannabinoids

Moisture

1 Unit = CBD Gummy w/Melatonin 25mg, 3.515g

### Cannabinoid Profile

Analyzed by 300.18 UHPLC/PDA

Cannabinoid	Mass	Mass	LOQ
	mg/unit	mg/g	
CBC	<LOQ	<LOQ	0.184
CBCa	<LOQ	<LOQ	0.184
CBD	25.029	7.121	0.184
CBDa	<LOQ	<LOQ	0.184
CBDV	<LOQ	<LOQ	0.184
CBDVa	<LOQ	<LOQ	0.184
CBG	<LOQ	<LOQ	0.184
CBGa	<LOQ	<LOQ	0.184
CBL	<LOQ	<LOQ	0.184
CBN	<LOQ	<LOQ	0.184
Δ8-THC	<LOQ	<LOQ	0.184
Δ9-THC	<LOQ	<LOQ	0.184
THCa	<LOQ	<LOQ	0.184
THCV	<LOQ	<LOQ	0.184
THCVa	<LOQ	<LOQ	0.184
<b>Total THC</b>	<b>ND</b>	<b>ND</b>	
<b>Total CBD</b>	<b>25.029</b>	<b>7.121</b>	
<b>Total</b>	<b>25.029</b>	<b>7.121</b>	



*Benjamin G.M. Chew*  
Benjamin G.M. Chew, Ph.D.  
Laboratory Director

*Glen Marquez*  
Glen Marquez  
Quality Control



4439 Polaris Ave  
Las Vegas, NV  
(702) 728-5180  
www.dblabslv.com

This report is considered highly confidential and the sole property of the customer. DB Labs will not discuss any part of this study with personnel other than those authorized by the client. The results described in this report only apply to the samples analyzed. The reported result is based on a sample weight with the applicable moisture content for that sample. LOQ = Limit of Quantitation. Pesticide LOQ = Instrument Limit of Quantitation. NA = Not Analyzed. ND = Not Detected. NR = Not Reported. NT = Not Tested. PGR = Plant Growth Regulator. Unless otherwise stated all quality control samples performed within specifications established by the Laboratory. This product has been tested by DB Labs, LLC (MME# 61887736101164525768) using valid testing methodologies and a quality system as required by Nevada state law. Edibles are picked up prior to final packaging unless otherwise stated. Values reported relate only to the product tested. The uncertainty of measurement associated with the measurement result reported in this certificate is available from the organization upon request. DB Labs makes no claims as to the efficacy, safety or other risks associated with any detected or non-detected levels of any compounds reported herein. This Certificate shall not be reproduced except in full, without the written approval of DB Labs.